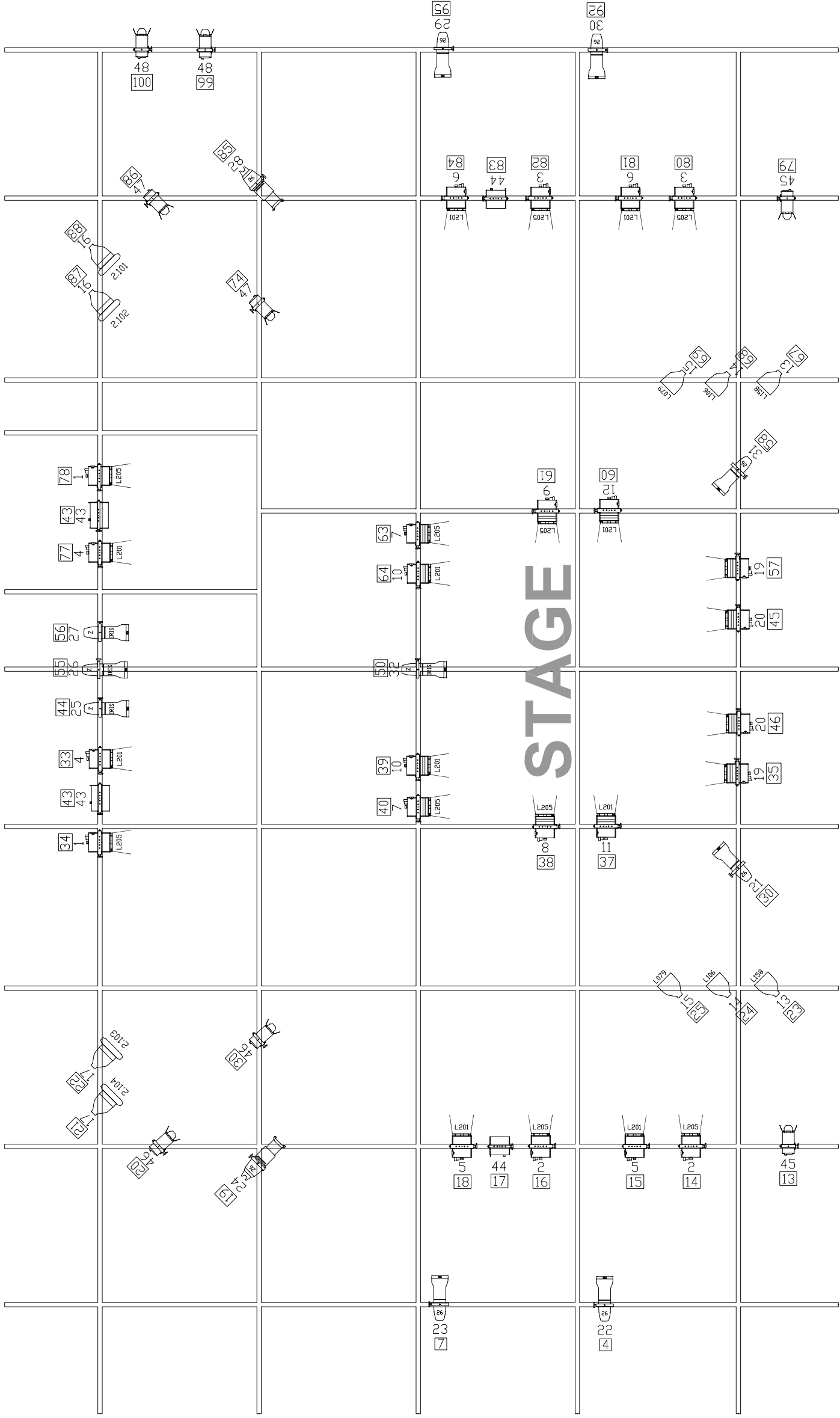


LEGEND:		RIGGED
	STRAND FRESNEL CANTATA 1KW	12 / 12
	STRAND FRESNEL HARMONY 1KW	12 / 16
	ETC SOURCE FOUR 26 DEGREE	2 / 2
	ETC SOURCE FOUR JUNIOR 26 DEGREE	6 / 9
	ETC SOURCE FOUR JUNIOR 25/50 ZOOM	4 / 4
	ETC SOURCE FOUR PAR 575W	6 / 6
	ETC SOURCE FOUR PAR 750W	4 / 4
	STRAND NOCTURN 1000	2 / 5
	STRAND NOCTURN 500	2 / 2
	CCT MINUETTE	8 / 9
	Chroma Q SCROLLER	4 / 4



SCROLLER COLOUR BY FRAME

F 00	Lee	130	Clear (Header)
F 01	Rosco #	304	Pale apricot
F 02	Rosco #	344	Folies pink
F 03	Rosco #	349	Fisher Fuschia
F 04	Rosco #	382	Indigo
F 05	Rosco #	357	Royal lavender
F 06	Rosco #	52	Light lavender
F 07	Rosco #	21	Golden amber
F 08	Rosco #	22	Deep Amber
F 09	Rosco #	26	Light red
F 10	Rosco #	371	Theatre booster 1
F 11	Rosco #	78	Trudy Blue
F 12	Rosco #	79	Bright blue
F 13	Rosco #	83	Medium blue
F 14	Rosco #	68	Sky blue
F 15	Lee	124	Dark Green (Header)

NOTES

ALL STRAND CANTATA & HARMONY FRESNELS ARE LAMPED AT 1kw

ALL MINUETTES AND NOCTURNS ARE USED AS HOUSE LIGHTING

TITLE-Garrick Studio Standard Rig
 VENUE-Lichfield Garrick Studio
 DRAWN BY-Jonathan Martlew
 DRAWING DETAIL-(A3at1-50JMLICHGARRICK_STUDIO-V1.dwg)
 REVISIONS-DRAFT 12/10/2011
 SCALE- 1:50 @ A3

